

Stock No. 26273

Document Number 1373977

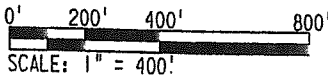
Received for filing this 24th day of July, 2000 at 8 AM and filed in volume 20 of Certified Survey Maps on Page 3814 as Certified Survey Map Number 3814. Janice Flenz, Register of Deeds. Janice Flenz NS

OUTAGAMIE COUNTY CERTIFIED SURVEY MAP NO. 3814

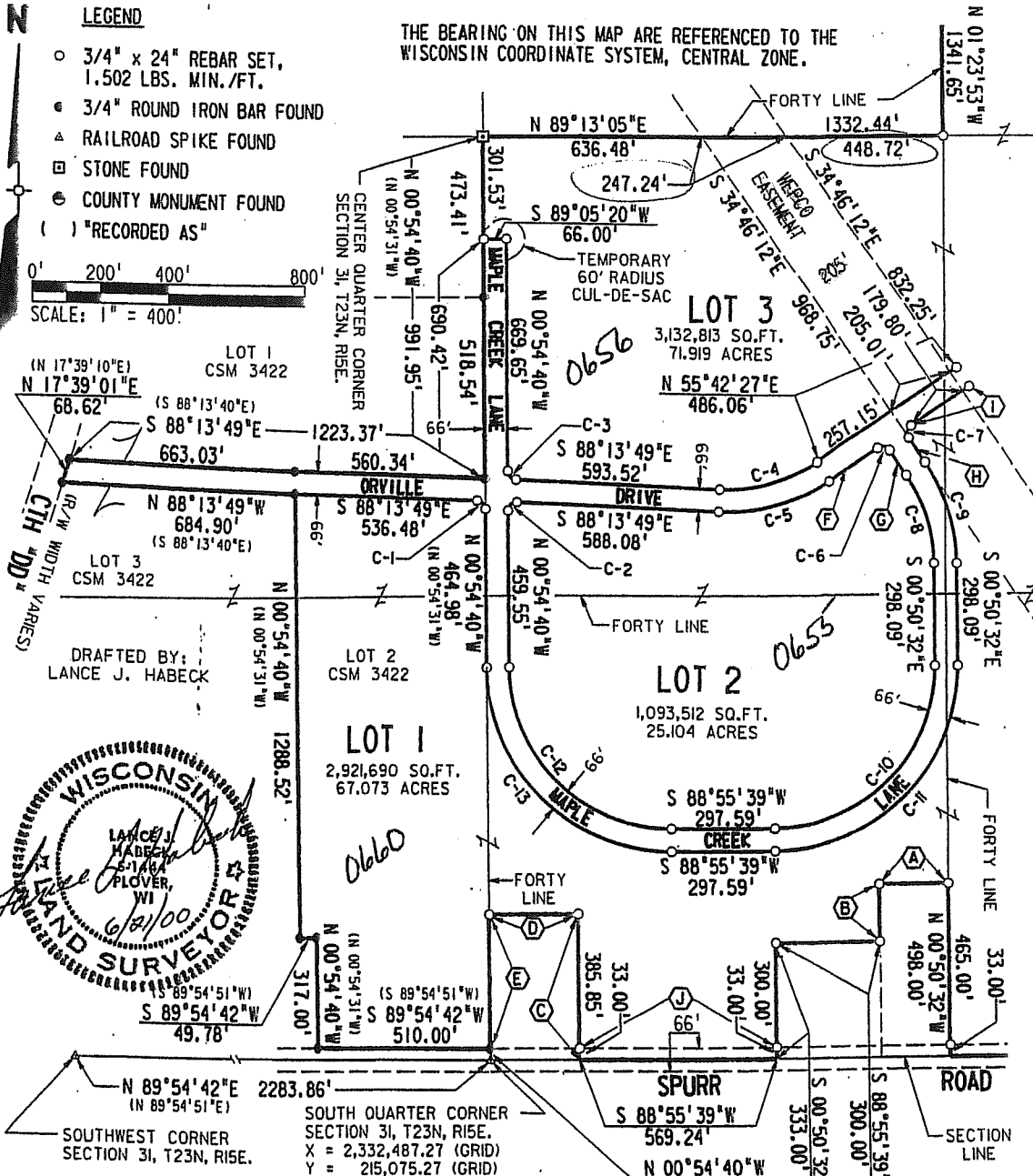
A SUBDIVISION OF LOT 2 OF OUTAGAMIE COUNTY CERTIFIED SURVEY MAP NO. 3422, BEING PART OF THE NORTHEAST 1/4 OF THE SOUTHWEST 1/4 AND THE SOUTHEAST 1/4 OF THE SOUTHWEST 1/4, ALSO THE NORTHWEST 1/4 OF THE SOUTHEAST 1/4, THE SOUTHEAST 1/4 OF NORTHEAST 1/4 AND PARTS OF THE NORTHEAST 1/4 OF THE SOUTHEAST 1/4, THE SOUTHEAST 1/4 OF THE SOUTHEAST 1/4 AND THE SOUTHWEST 1/4 OF THE SOUTHEAST 1/4, ALL IN SECTION 31, TOWN 23 NORTH, RANGE 15 EAST, CITY OF NEW LONDON, OUTAGAMIE COUNTY, WISCONSIN.

LEGEND

- 3/4" x 24" REBAR SET, 1.502 LBS. MIN./FT.
- 3/4" ROUND IRON BAR FOUND
- ▲ RAILROAD SPIKE FOUND
- STONE FOUND
- COUNTY MONUMENT FOUND
- () "RECORDED AS"



THE BEARING ON THIS MAP ARE REFERENCED TO THE WISCONSIN COORDINATE SYSTEM, CENTRAL ZONE.



- (A) S 88°55'39"W, 200.00'
- (B) S 00°50'32"E, 165.00'
- (C) N 00°54'40"W, 418.85'
- (D) S 88°55'39"W, 260.00'
- (E) S 00°54'40"E, 385.85'
- (F) N 55°42'27"E, 166.91'
- (G) N 34°46'12"W, 84.46'
- (H) N 34°46'12"W, 83.50'
- (I) N 55°42'27"E, 203.15'
- (J) S 88°55'39"W, 569.28'

NOTE: SEE PAGE THREE (3) FOR CURVE DATA

THIS MAP SUPERCEDES AND CORRECTS CERTIFIED SURVEY MAP NO. 3520, VOLUME 18, PAGE 3520 OF CERTIFIED SURVEY MAPS, DOC. NO. 1331548.

NOTE: SEE PAGE THREE (3) FOR CURVE DATA

- (A) S 88°55'39"W, 200.00'
- (B) S 00°50'32"E, 165.00'
- (C) N 55°42'27"E, 166.91'
- (D) N 34°46'12"W, 84.46'
- (E) N 34°46'12"W, 83.50'
- (F) N 55°42'27"E, 203.15'
- (G) S 88°55'39"W, 569.28'
- (H) S 59°04'55"E, 122.89'
- (I) N 59°04'55"W, 122.89'
- (J) N 15°13'05"E, 100.00'
- (K) N 15°13'05"E, 100.00'
- (L) S 34°46'12"E, 949.63'
- (M) S 34°46'12"E, 996.30'
- (N) S 88°55'39"W, 350.22'

